



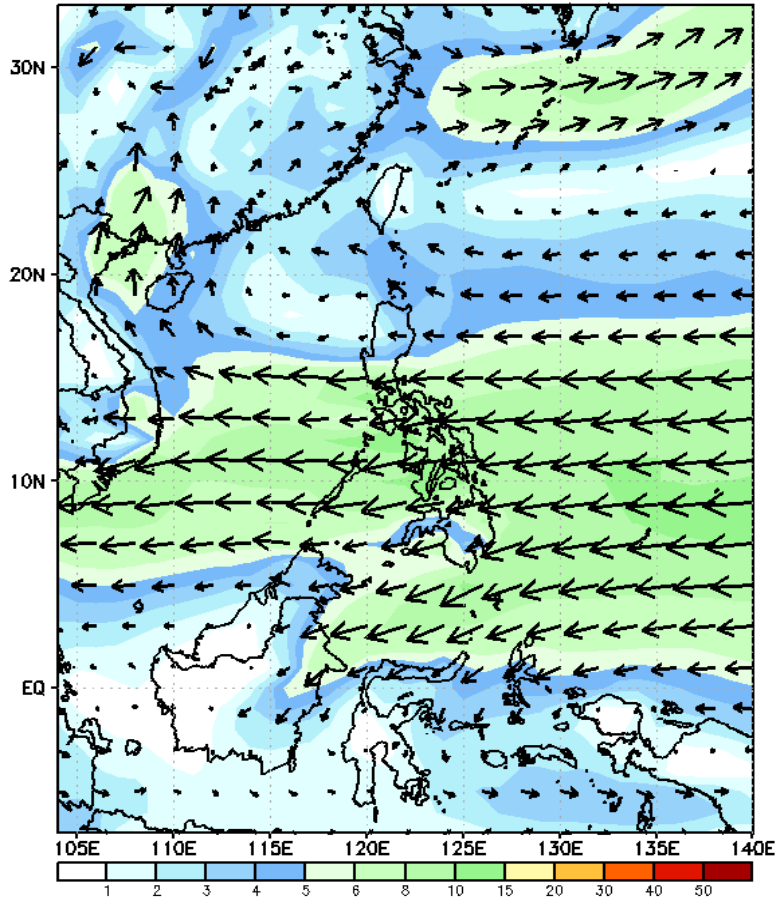
Week 1 & Week 2 Forecast for the Philippines using GEFS Model



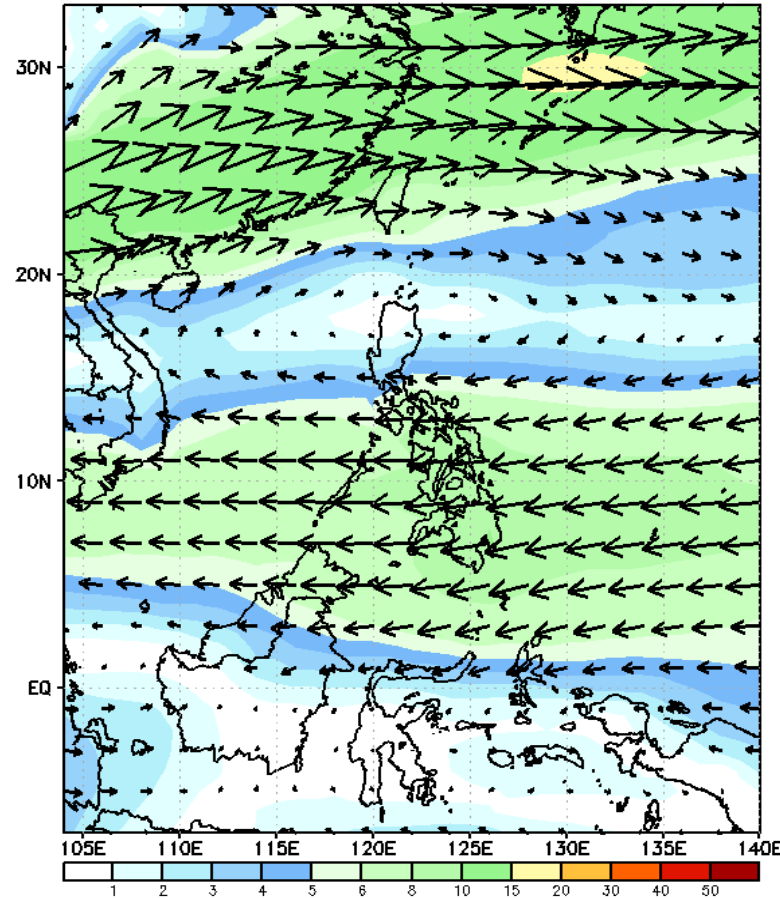
GEFS Week-1 Wind Forecasts:

Week 1: Mar 10-16, 2025

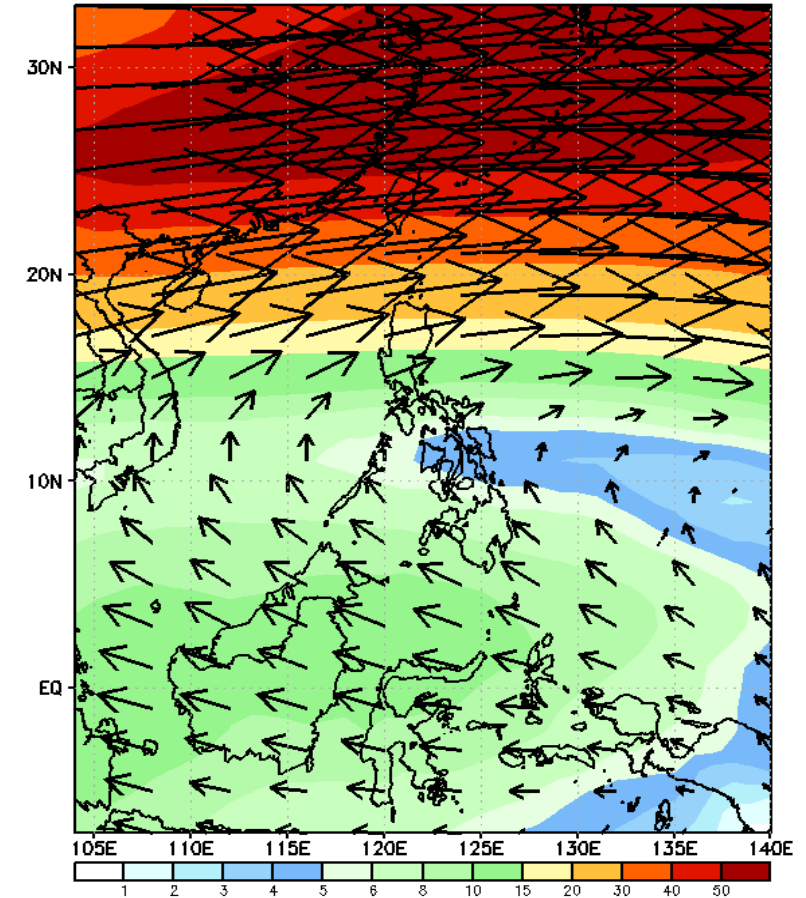
GEFS Week-1 850-hPa Wind Total
Valid: 20250310 - 20250316



GEFS Week-1 700-hPa Wind Total
Valid: 20250310 - 20250316

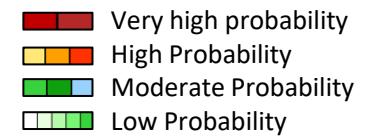


GEFS Week-1 200-hPa Wind Total
Valid: 20250310 - 20250316



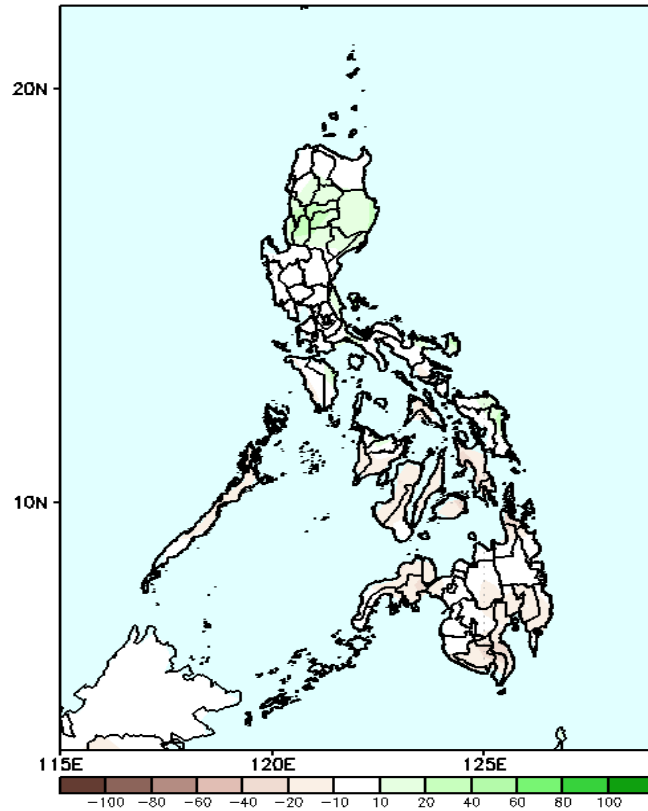
Northeast Monsoon affecting extreme Northern Luzon while Easterlies affecting the rest of the country during the forecast period

Precipitation Anomaly and Exceedance Probability > 25/50 mm



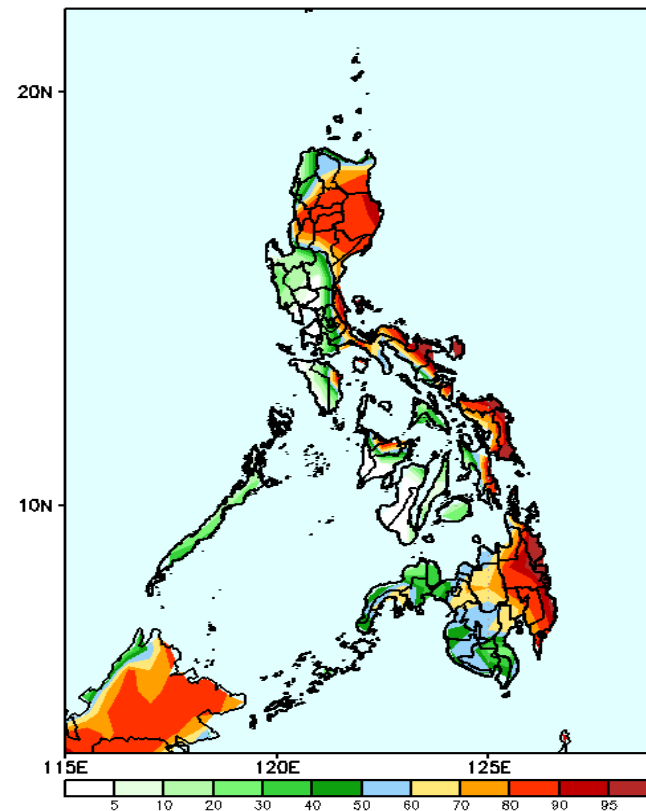
Week 1: Mar 10-16, 2025

GEFS Week-1 Precip Anomaly
Valid: 20250310 - 20250316



Increase of rainfall of 20-40mm is expected in some areas in northern Luzon.

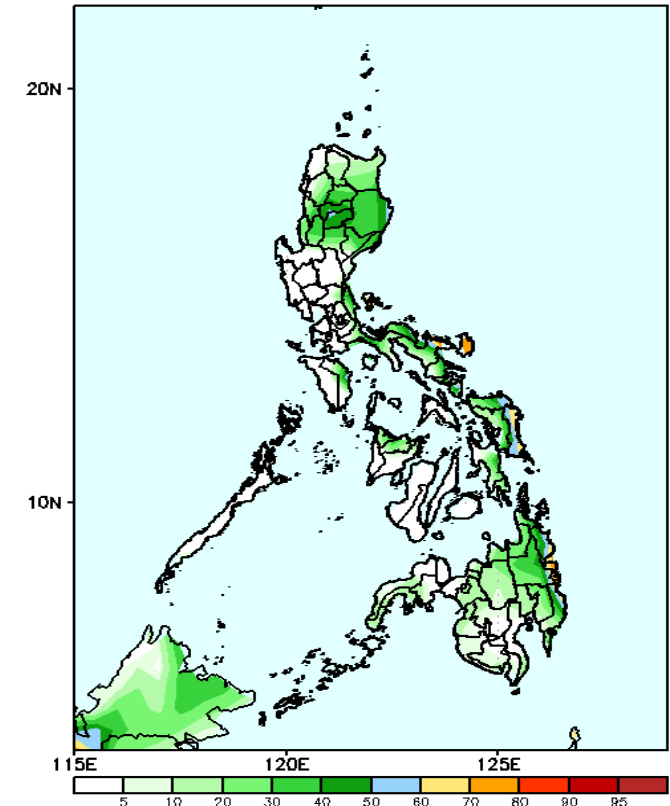
GEFS Week-1 Exceedance Prob. > 25mm
Valid: 20250310 - 20250316



Probability to Exceed 25mm

- High to very high over most parts of Cagayan Valley, CAR, Bicol Region, Eastern Visayas, and eastern Mindanao;
- Moderate to high over the rest of Mindanao;
- Low to moderate over the rest of Luzon and Visayas.

GEFS Week-1 Exceedance Prob. > 50mm
Valid: 20250310 - 20250316



Probability to Exceed 50mm

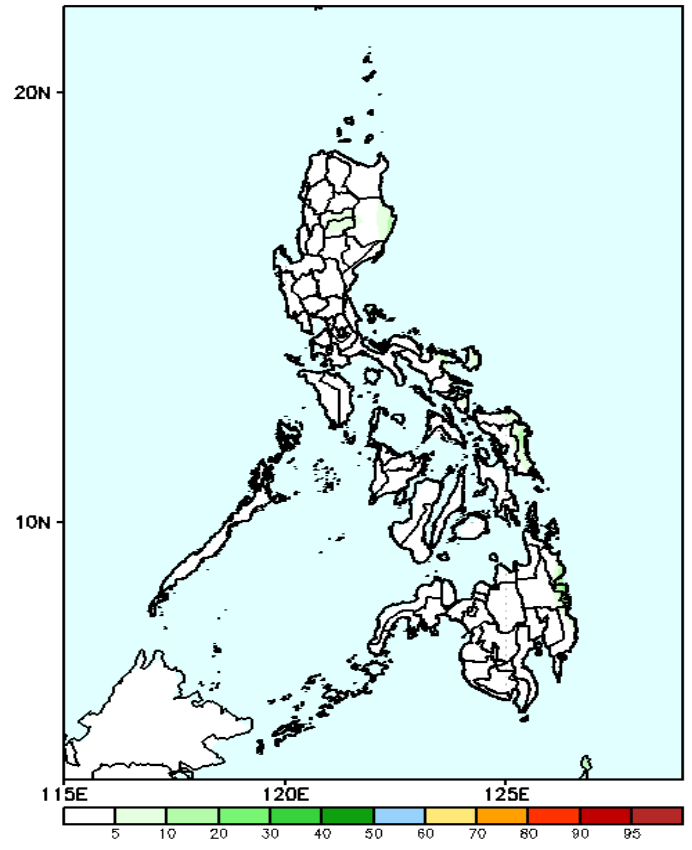
- Moderate to high over the easternmost part of Isabela, northern part of Camarines Norte, Catanduanes, Eastern Samar, Surigao del Sur and the northern part of Davao Oriental;
- Low to moderate over the rest of the country.

Exceedance Probability > 100/150/200 mm

- Very high probability
- High Probability
- Moderate Probability
- Low Probability

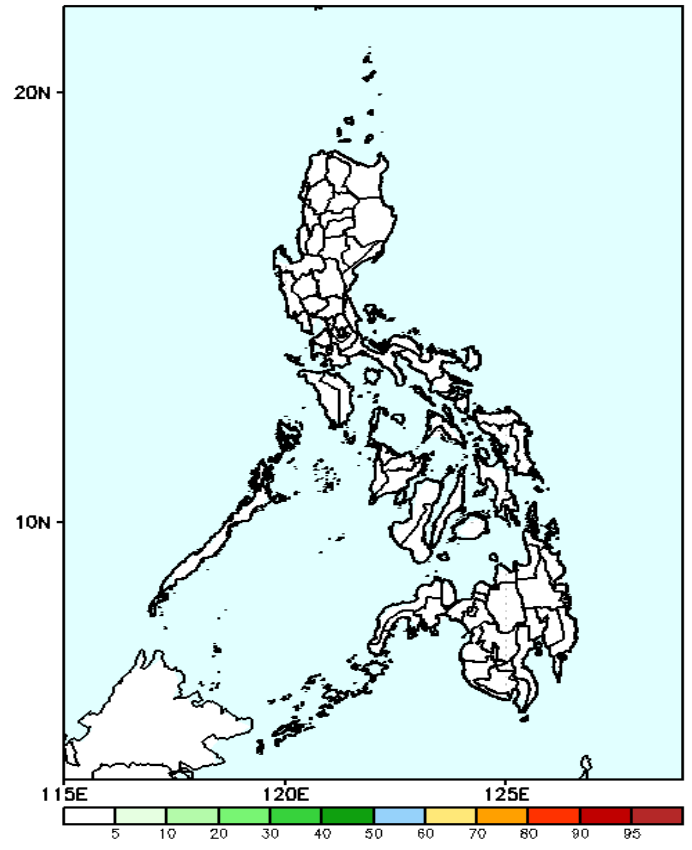
Week 1: Mar 10-16, 2025

GEFS Week-1 Exceedance Prob. > 100mm
Valid: 20250310 - 20250316



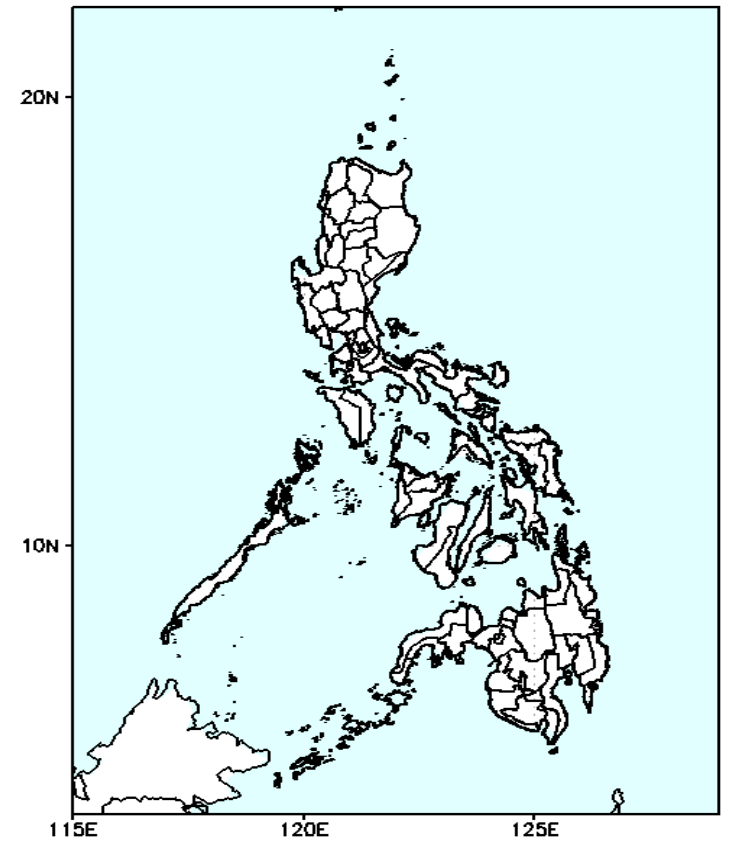
Probability to Exceed 100mm
•Low across the country.

GEFS Week-1 Exceedance Prob. > 150mm
Valid: 20250310 - 20250316



Probability to Exceed 150mm
•Low across the country.

GEFS Week-1 Exceedance Prob. > 200mm
Valid: 20250310 - 20250316

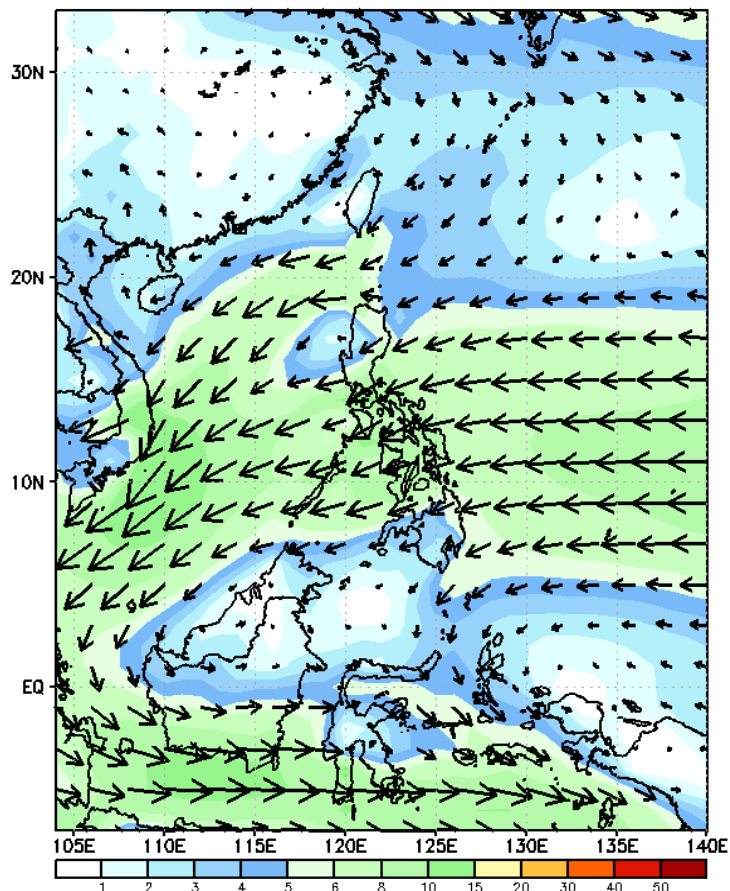


Probability to Exceed 200mm
•Low across the country.

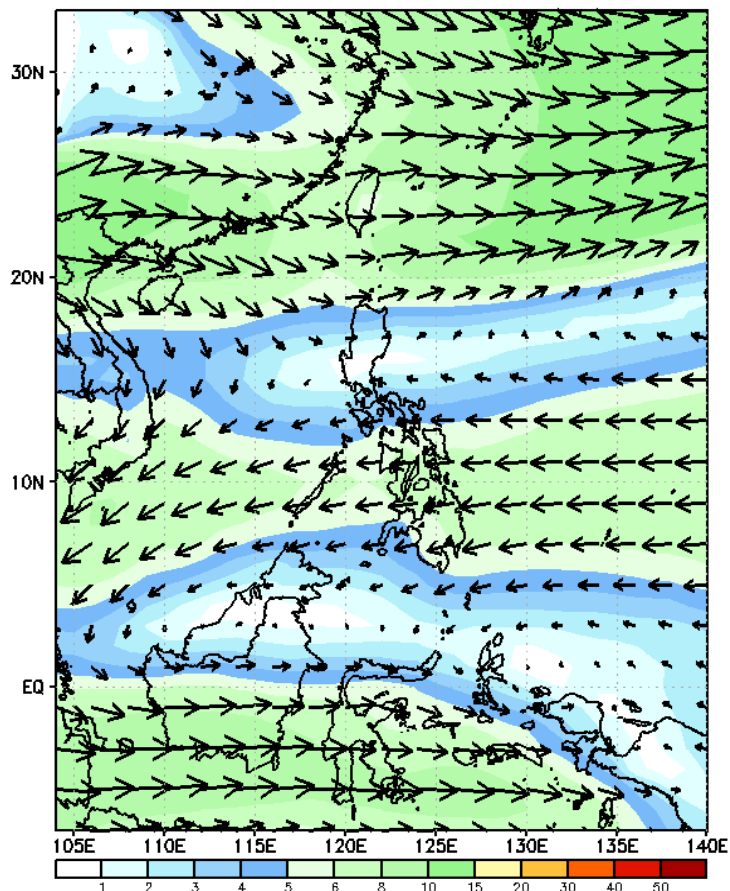
GEFS Week-2 Wind Forecasts:

Week 2: Mar 17-23, 2025

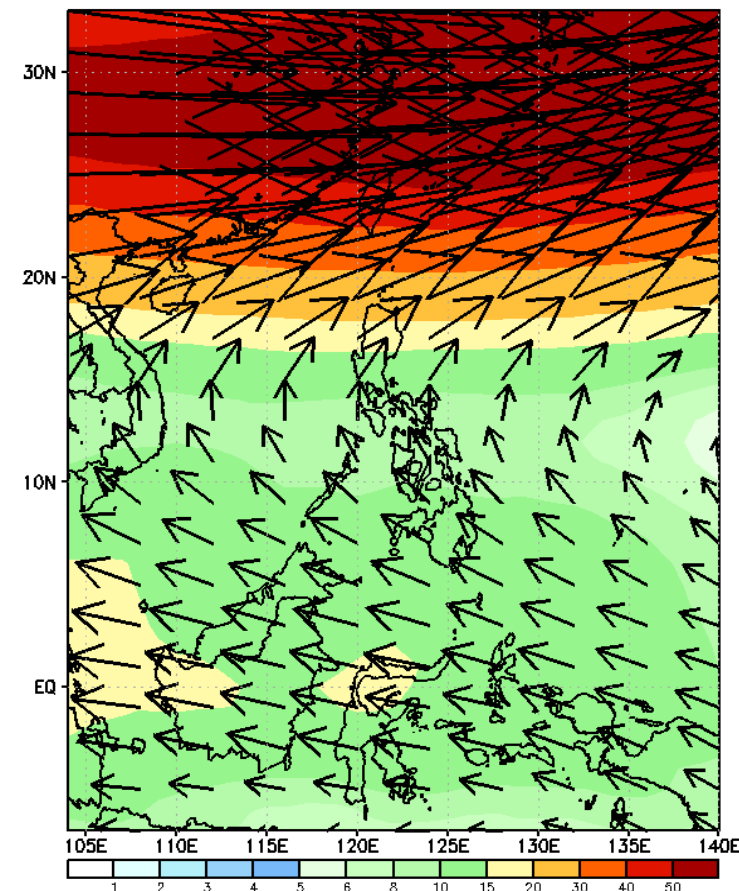
GEFS Week-2 850-hPa Wind Total
Valid: 20250317 - 20250323



GEFS Week-2 700-hPa Wind Total
Valid: 20250317 - 20250323

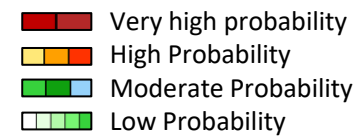


GEFS Week-2 200-hPa Wind Total
Valid: 20250317 - 20250323



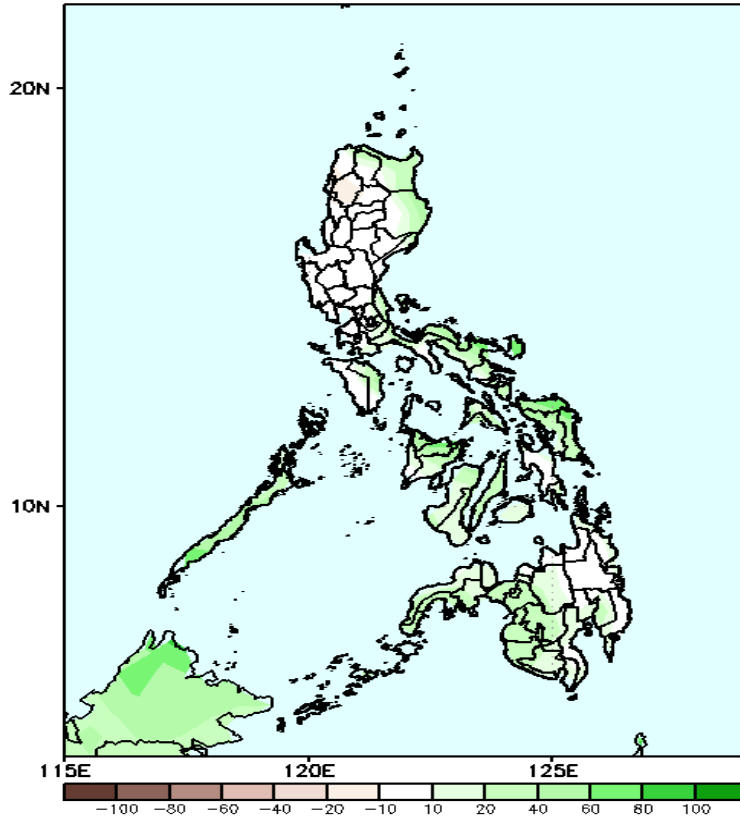
Northeast Monsoon affecting Northern Luzon while Easterlies affecting the rest of the country during the forecast period

Precipitation Anomaly and Exceedance Probability > 25/50 mm



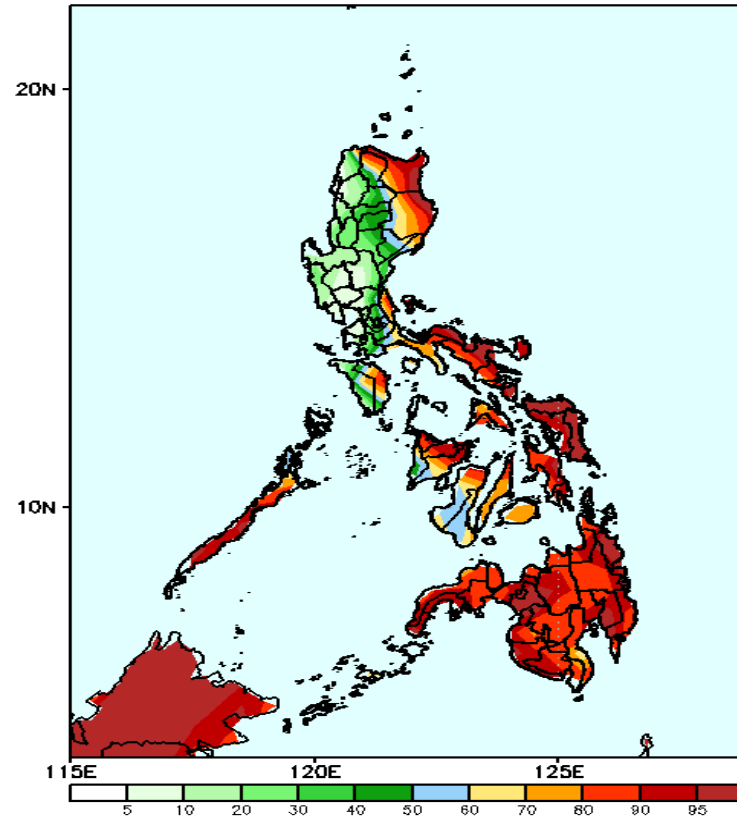
Week 2: Mar 17-23, 2025

GEFS Week-2 Precip Anomaly
Valid: 20250317 - 20250323



Increase of rainfall of 20-80mm is expected over most parts of Apayao, Cagayan, Isabela, southern Luzon, Bicol Region, Visayas and western Mindanao.

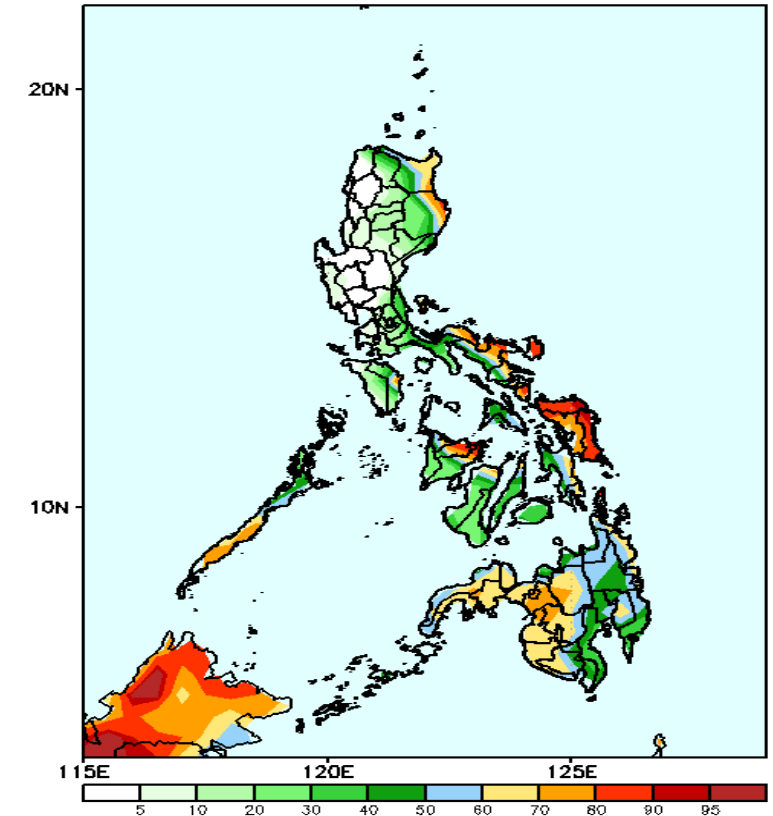
GEFS Week-2 Exceedance Prob. > 25mm
Valid: 20250317 - 20250323



Probability to Exceed 25mm

- High to very high over most parts of Isabela, Mt. Province, Ifugao, Catanduanes, Sorsogon, Eastern Visayas, and eastern Mindanao;
- Moderate to high over the rest of Northern Luzon, Quezon, Bicol Region, and the rest of Mindanao;
- Low to moderate over the rest of the country.

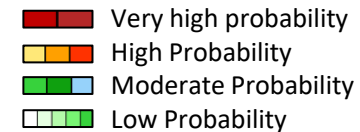
GEFS Week-2 Exceedance Prob. > 50mm
Valid: 20250317 - 20250323



Probability to Exceed 50mm

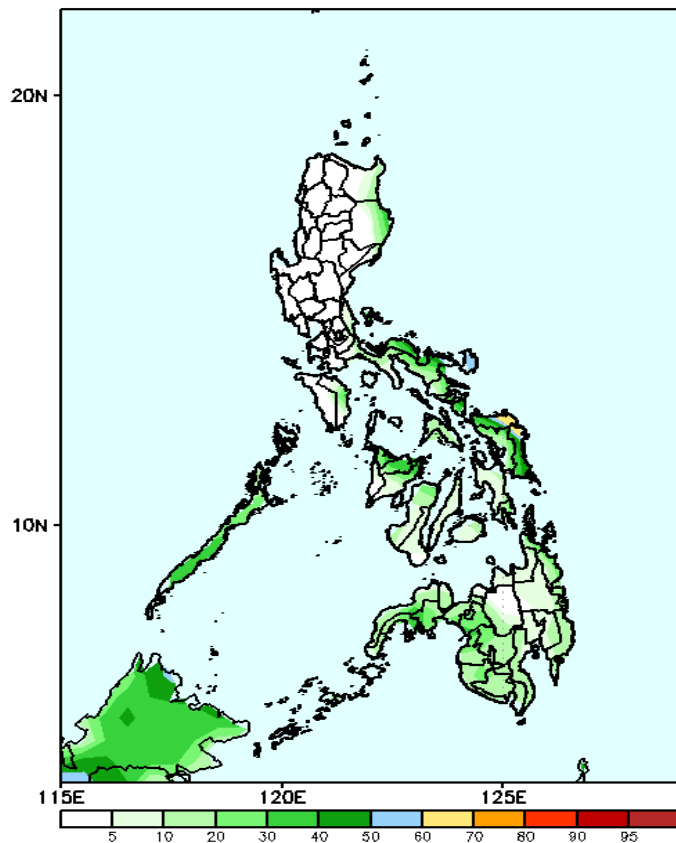
- Moderate to high over the eastern part of Cagayan and Isabela, Bicol Region, Capiz and Samar Provinces;
- Low to moderate over the rest of the country.

Exceedance Probability > 100/150/200 mm

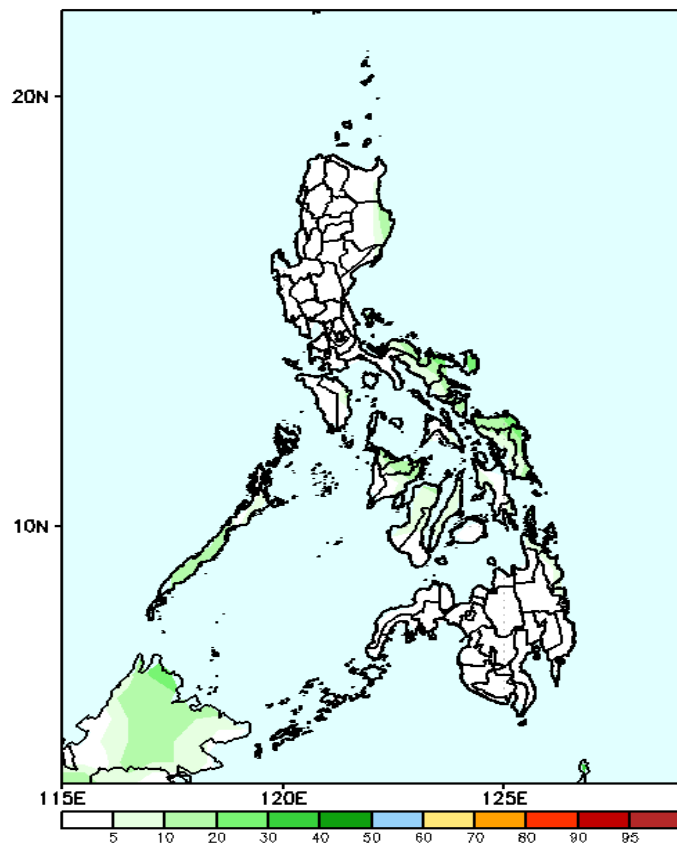


Week 2: Mar 17-23, 2025

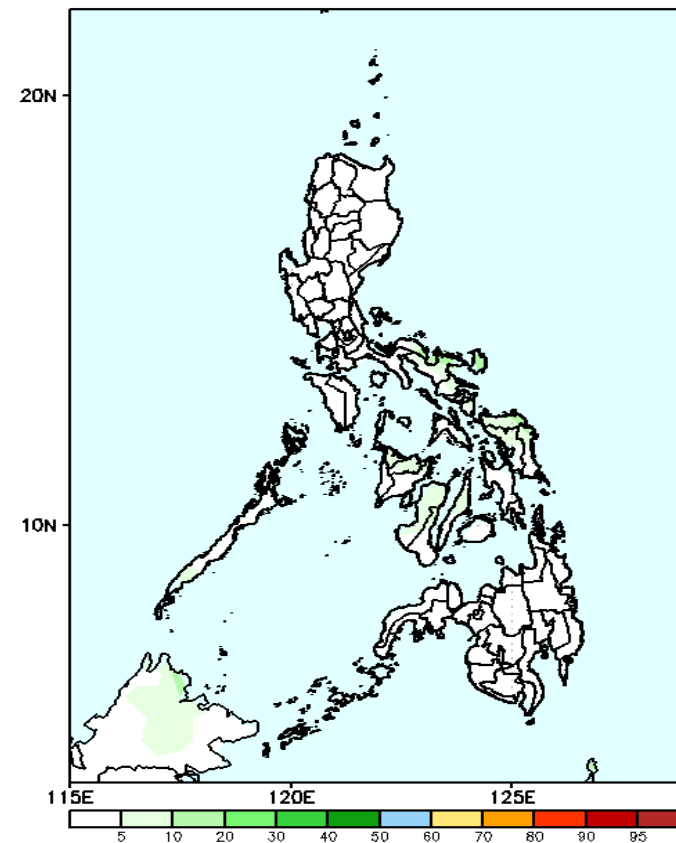
GEFS Week-2 Exceedance Prob. > 100mm
Valid: 20250317 - 20250323



GEFS Week-2 Exceedance Prob. > 150mm
Valid: 20250317 - 20250323



GEFS Week-2 Exceedance Prob. > 200mm
Valid: 20250317 - 20250323



Probability to Exceed 100mm

- Moderate to high over Northern and Eastern Samar;
- Low to moderate over Bicol Region, Palawan, the rest of Visayas and Mindanao;
- Low over the rest of the country.

Probability to Exceed 150mm

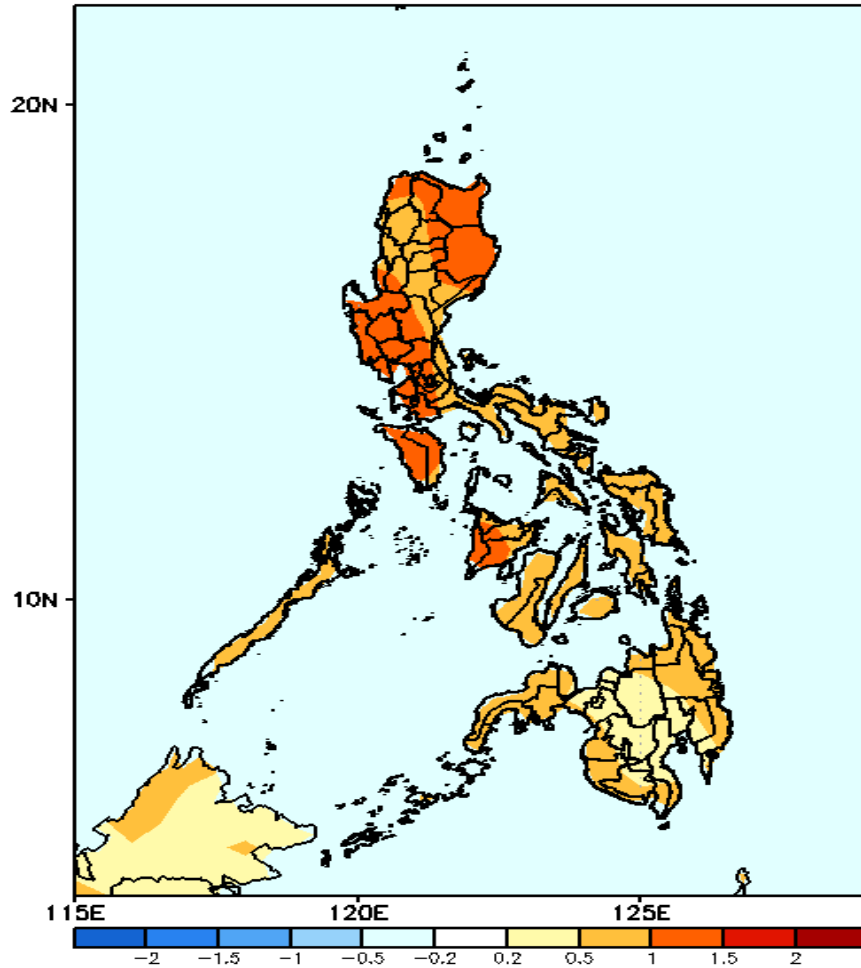
- Low across the country.

Probability to Exceed 200mm

- Low across the country.

GEFS Week-1 & 2 Forecasts: T2m Anomaly

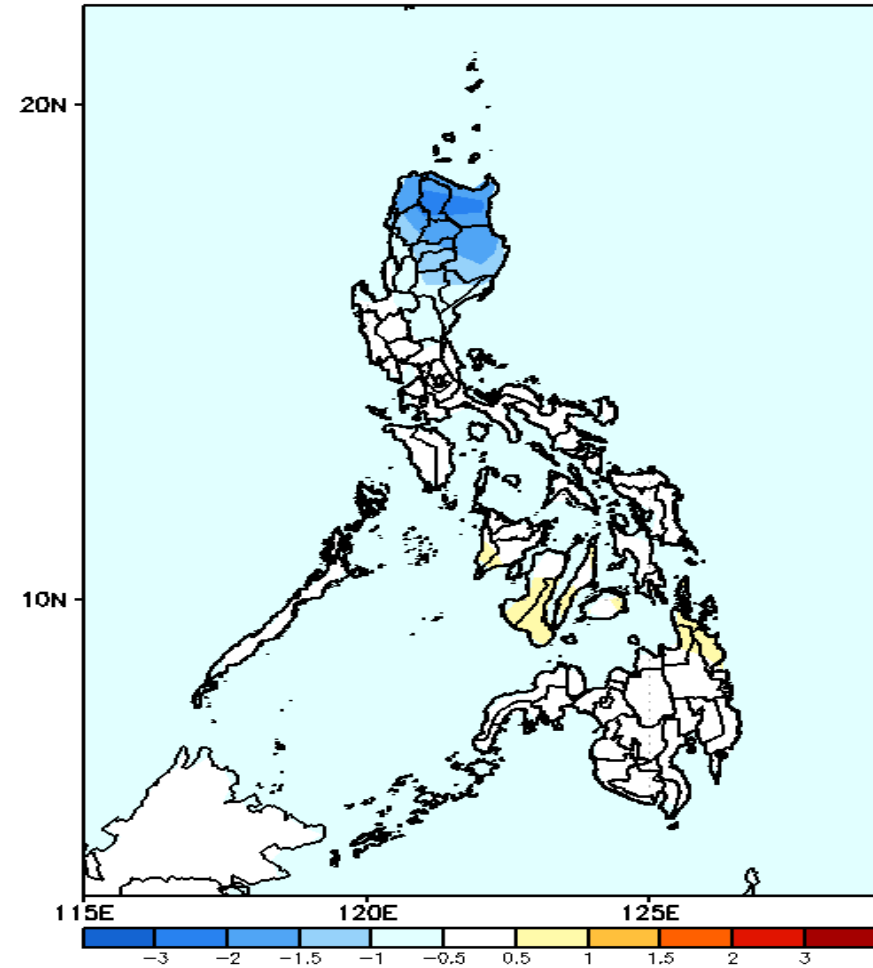
GEFS Week-1 T2m Anomaly
Valid: 20250310 – 20250316



2m Temperature Week 1: Mar 10-16, 2025

Slightly warmer to warmer than average surface air temperature will likely be experienced in most parts of the country.

GEFS Week-2 T2m Anomaly
Valid: 20250317 – 20250323



2m Temperature Week 2: Mar 17-23, 2025

Slightly cooler to cooler than average surface air temperature will likely be experienced in most parts of northern Luzon, while near to slightly warmer temperature is expected for the rest of the country.